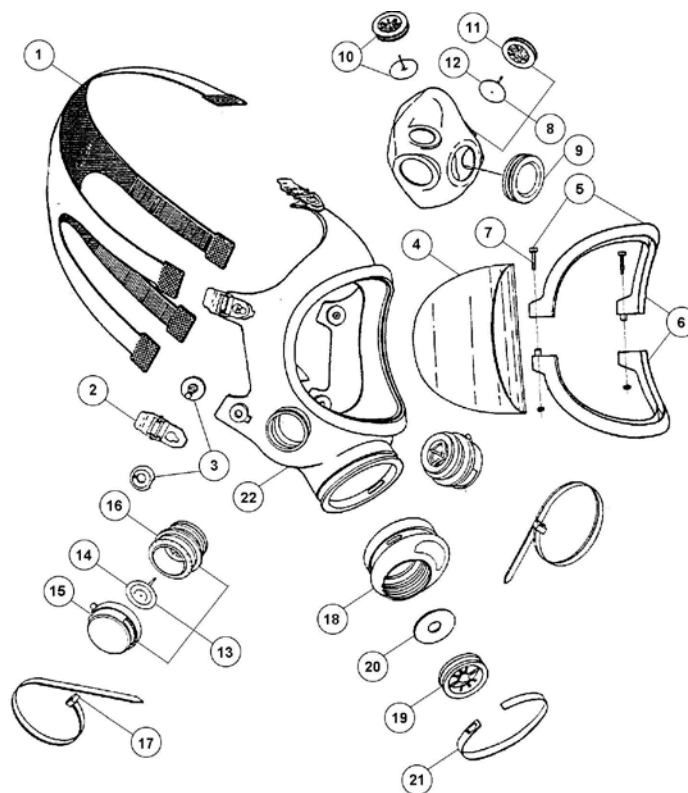


**Spare part – Price list 2018 / 466 611 (Page 1)**

No.	Order no.	Article-Designation	Unit	Price/EUR
---	466 611	Full face mask C 607/SELECTA	Piece	88,00
1	465 569	Head harness for C 607/SFERA	Piece	28,50
2	460 144	Tightening buckle C 607/SFERA	Pack./5 pcs.	19,70
3	460 145	Attachment pin complete C 607	Piece	2,70
4	260 331	PC-Visor C 607/SELECTA	Piece	29,50
5 - 7	460 312	Visor frame complete C 607	Piece	17,60
8	462 290	Inner mask C 607 individually	Piece	24,00



## Spare part – Price list 2018 / 466 611 (Page 2)

No.	Order no.	Article-Designation	Unit	Price/EUR
9	462 280	Stopper SELECTA complete for inner mask C607	Piece	4,20
10	467 350	Check valve complete C607/SFERA consisting of:	Piece	5,90
11	467 351	Check valve seat C607/SFERA	Piece	1,90
12	467 356	Check valve membrane C607/SFERA	Piece	4,00
13	— —	Exhalation valve complete C 607 consisting of:	Piece	-----
14	467 246	Exhalation valve membrane C 607	Piece	4,50
15	467 248	Exhalation valve cap for C 607 (blue)	Piece	2,40
16	467 261	Exhalation valve seat C 607	Piece	4,40
17	460 221	Exhalation valve tightening strap for C 607 (Steel)	Piece	5,20
18	464 111	Connector complete for C 607/SELECTA	Piece	37,80
19	464 113	Inhalation valve seat and sealing for SELECTA	<b>(no longer available)</b>	
20	464 115	Inhalation valve disk LS 34	Piece	3,00
21	460 222	Connector piece tightening strap for C 607 (Steel)	Piece	5,80
22	— —	Facemask C 607 individually (not as spare part available)	Piece	----