

Spare part – Price list 2026

Full face mask C 607/Selecta/TR



Order no.: 466 612

EAN: 4013207466612

Product designation:

Full face mask C 607/Selecta/TR
(construction with Triplex laminated glass visor)

Price/EUR

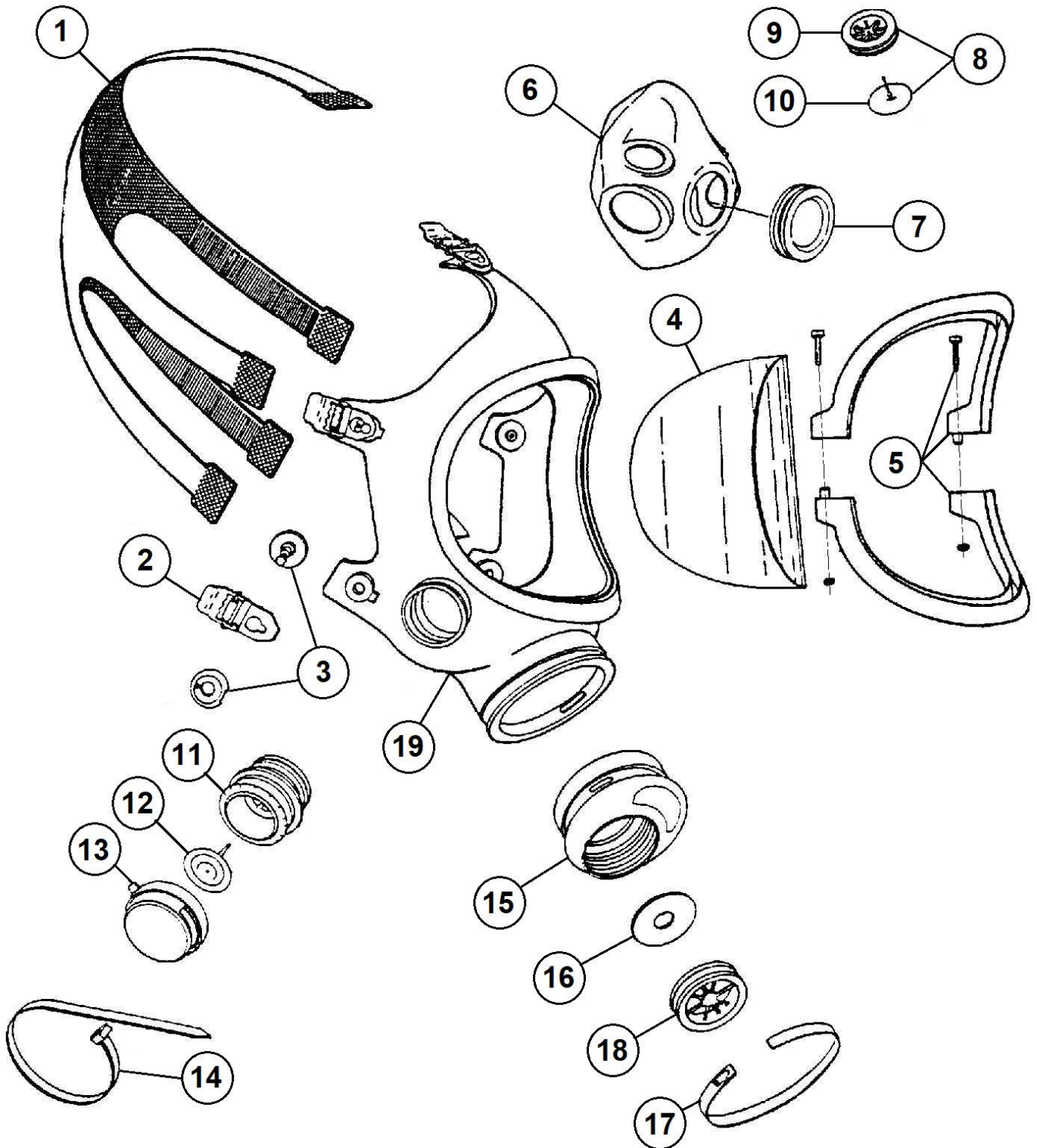
158,00



No.	Order no.	Article-Designation	Unit	Price/EUR
1	465 569	Head harness for C 607/SFERA	Piece	33,10
2	460 144	Tightening buckle C 607/SFERA compl.	Pack./5 pcs.	23,50
3	460 145	Attachment pin C 607 compl.	Piece	3,20
4	260 341	PC-Visor C 607/Selecta	Piece	83,70
5	460 312	Triplex-Verbundglasscheibe C 607 "TR"	Piece	21,10
6	462 290	Inner mask C 607 individually	Piece	26,70
7	462 280	Stopper Selecta for inner mask C 607	Piece	5,20
8	467 350	Check valve C 607/SFERA compl. consisting of: 9 - 10	Piece	7,20
9	467 351	Check valve seat C607/SFERA	Piece	2,40
10	467 356	Check valve membrane C607/SFERA	Piece	5,50
11	467 261	Exhalation valve seat C 607	Piece	5,30
12	467 246	Exhalation valve membrane C 607	Piece	6,30
13	467 248	Exhalation valve cap for C 607 (blue)	Piece	2,90
14	460 221	Exhalation valve tightening strap for C 607 (Steel)	Piece	5,90
15	464 111	Connector for C 607/Selecta compl.	Piece	45,20
16	464 115	Inhalation valve disk LS/34	Piece	3,70
17	460 222	Connector piece tightening strap for C 607 (Steel)	Piece	6,80
18		Inhalation valve seat and sealing for Selecta (not as spare part available)		
19		Facemask C 607 individually (not as spare part available)		

EKASTU | Safety

WIR PRODUZIEREN SICHERHEIT!



EP 466612 English_01-01.26