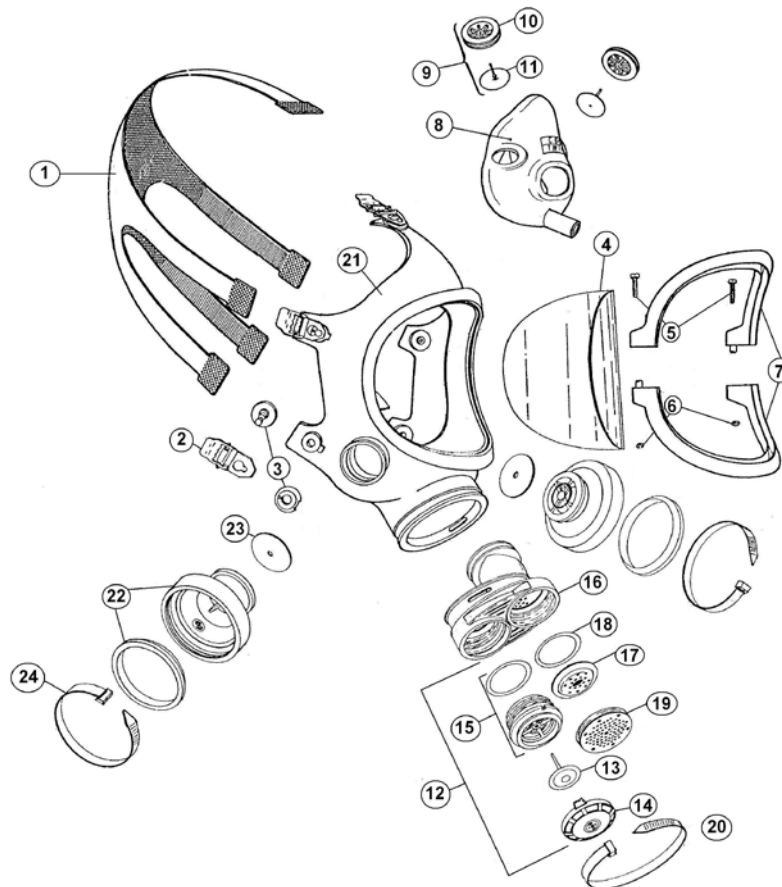


**Spare part – Price list 2020 / 466 777 (Page 1)**

| No.   | Order no. | Article-Designation                    | Unit         | Price/EUR |
|-------|-----------|--|--------------|-----------|
| ---   | 466 777   | Full face mask C 607/TWIN              | Piece        | 82,60     |
| 1     | 465 569   | Head harness for C 607/SFERA           | Piece        | 28,50     |
| 2     | 460 144   | Tightening buckle C 607/SFERA complete | Pack./5 pcs. | 19,70     |
| 3     | 460 145   | Attachment pin complete C607           | Piece        | 2,70      |
| 4     | 260 331   | PC-Visor C 607/SELECTA                 | Piece        | 29,50     |
| 5 - 7 | 460 312   | Visor frame complete C 607             | Piece        | 17,60     |



## Spare part – Price list 2020 / 466 777 (Page 2)

| No.     | Order no. | Article-Designation  | Unit  | Price/EUR |
|---------|-----------|--|-------|-----------|
| 8       | 462 292   | Inner mask C 607/TWIN individually                                 | Piece | 24,00     |
| 9       | 467 350   | Check valve complete C 607/SFERA<br>consisting of:                 | Piece | 5,90      |
| 10      | 467 351   | Check valve seat C 607/SFERA                                       | Piece | 1,90      |
| 11      | 467 356   | Check valve membrane<br>C 607/SFERA                                | Piece | 4,50      |
| 12      | — —       | Exhalation valve compl. C 607/TWIN<br>consisting of:               | Piece | -----     |
| 13      | 467 246   | Exhalation valve membrane C 607                                    | Piece | 4,50      |
| 14      | 437 257   | Exhalation valve cap type U  | Piece | 2,30      |
| 15      | 467 262   | Exhalation valve seat C 607/TWIN<br>complete                       | Piece | 9,10      |
| 16 - 19 | 464 112   | Connector complete for C 607/TWIN<br>consisting of:                | Piece | 39,20     |
| 16      | — —       | Connector C 607/TWIN individually<br>(not as spare part available) | Piece | -----     |
| 17      | 464 116   | Speech diaphragm C 607/F   | Piece | 19,00     |
| 18      | 464 117   | Speech diaphragm gasket C 607/F                                    | Piece | 2,20      |
| 19      | 464 118   | Speech diaphragm cover C 607/F                                     | Piece | 3,00      |
| 20      | 460 222   | Connector piece tightening strap<br>for C 607 (Steel)              | Piece | 5,80      |
| 21      | — —       | Facemask C 607 individually<br>(not as spare part available)       | Piece | -----     |
| 22      | 421 531   | Filter holder C 607/TWIN complete                                  | Piece | 5,60      |
| 23      | 427 545   | Inhalation valve disk LS 35  | Piece | 3,00      |
| 24      | 460 221   | Exhalation valve tightening strap<br>for C 607 (Steel)             | Piece | 5,20      |